



Copper One Inc.

Management's Discussion and Analysis

Three and six months ended June 30, 2014

COPPER ONE INC.

Management's Discussion and Analysis

For the three and six months ended June 30, 2014

Introduction

The following Management's Discussion and Analysis ("MD&A") of financial results and related data of Copper One Inc. ("Copper One" or the "Company") is intended to complement and supplement the unaudited condensed interim consolidated financial statements of Copper One Inc. for the three and six months ended June 30, 2014 and 2013 (The "Financial Statements") and should be read in conjunction with the Financial Statements. The Company's Financial Statements have been prepared in accordance with International Financial Reporting Standards ("IFRS") as issued by the International Accounting Standards Board. Except as otherwise disclosed all dollar figures in this report are stated in Canadian dollars. Additional information relevant to the Company can be found on the SEDAR website at www.sedar.com.

The commentary is current to August 22, 2014 unless otherwise indicated. References to the 1st, 2nd, 3rd and 4th quarters of 2014 or Q1-2014, Q2-2014, Q3-2014 and Q4-2014, and the 1st, 2nd, 3rd and 4th quarters of 2013 or Q1-2013, Q2-2013, Q3-2013 and Q4-2013 mean the three months ended March 31, June 30, September 30 and December 31, 2014 and 2013 respectively. The reader should be aware that historical results are not necessarily indicative of future performance. The Company is a reporting issuer in the Provinces of Alberta, British Columbia and Ontario. The Company's common shares commenced trading on the TSX Venture Exchange ("TSX-V") on November 16, 2009 under the symbol "CUO" and prior to that traded on the Canadian National Stock Exchange.

This MD&A should also be read in conjunction with the Company's audited consolidated financial statements and the MD&A for the year ended December 31, 2013.

Dr. William Stone, P. Geo., Copper One's Chief Consulting Geologist, is a "Qualified Person" as such term is defined under National Instrument 43-101 guidelines and has reviewed and approved the scientific and technical information in this MD&A.

Cautionary Note Regarding Forward Looking Statements

Except for statements of historical fact relating to Copper One, certain information contained herein constitutes forward-looking information under Canadian securities legislation. Forward-looking statements include, but are not limited to, statements with respect to the Company's proposed acquisitions and strategy, development potential and timetable of the Company's properties; the Company's ability to raise required funds; future mineral prices; mineralization projections; conclusions of economic evaluation; the timing and amount of estimated future exploration and development; costs of development; capital expenditures; success of exploration activities; mining or processing issues; currency exchange rates; government regulation of mining operations; and environmental risks. Generally, forward-looking statements can be identified by the use of forward-looking terminology such as "plans", "expects" or "does not expect", "is expected", "budget", "scheduled", "estimates", "forecasts", "intends", "anticipates" or "does not anticipate", or "believes", or variations of such words and phrases or statements that certain actions, events or results "may", "could", "would", "might" or "will be taken", "occur" or "be achieved". Forward-looking statements are based on the opinions and estimates of management as of the date such statements are made. Estimates regarding the anticipated timing, amount and cost of exploration activities are based on previous industry experience and regional political and economic stability. Capital and operating cost estimates are based on extensive research of the Company, recent estimates of exploration costs and other factors that are set out herein. Forward-looking statements are subject to known and unknown risks, uncertainties and other factors that may cause the actual results, level of activity, performance or achievements of the Company to be materially different from those expressed or implied by such forward-looking statements, including but not limited to risks related to: unexpected events and delays during exploration and development; acquisition risks; regulatory risks; revocation of government approvals; timing and availability of external financing on acceptable terms;

COPPER ONE INC.

Management's Discussion and Analysis

For the three and six months ended June 30, 2014

actual results of current exploration activities; changes in project parameters as plans continue to be refined; future prices of minerals; accidents, labour disputes and other risks of the mining industry. Although management of the Company has attempted to identify important factors that could cause actual results to differ materially from those contained in forward-looking statements, there may be other factors that cause results not to be as anticipated, estimated or intended. There can be no assurance that such statements will prove to be accurate, as actual results and future events could differ materially from those anticipated in such statements. Accordingly, readers should not place undue reliance on forward-looking statements. The Company does not undertake to update any forward-looking statements, except in accordance with applicable securities laws.

Description of Business

The Company is in the process of exploring and evaluating mineral property interests in Quebec, Canada. The Company owns 100% of the 60,000 hectare project area referred to as the Rivière Doré Property, which covers an 85 kilometer long newly discovered layered mafic intrusive complex located southeast of the town of Val-d'Or, Quebec. The Company also holds a 100% interest in the Queylus copper gold property, located near the town of Chibougamau, Quebec. The Queylus Property is located less than 10 kilometers from the town of Chibougamau, Quebec and consists of 225 claims totalling approximately 3,600 hectares (36 km²). Access is excellent and is provided by Highway 167, which runs through the western portion of the property.

On April 8, 2014, 8815046 Canada Ltd. ("8815046"), a wholly-owned subsidiary of the Company, entered into a definitive purchase agreement (the "Purchase Agreement") with FQM (Akubra) Inc. ("FQM (Akubra)"), a wholly-owned subsidiary of First Quantum Minerals Ltd. ("First Quantum"), to acquire a 100% interest in the past producing Troilus Mine located approximately 175 km by road from the town of Chibougamau, Quebec, Canada. The Troilus property consists of certain mineral claims and one surveyed mining lease. The acquisition will include all infrastructures such as roads, power lines, camp buildings, permitted tailings pond, and associated water treatment facilities.

Under the terms of the Purchase Agreement, 8815046, will acquire 100% of the Troilus property by assuming all obligations and liabilities relating the property effective as of January 1, 2014, including the remaining obligations of FQM (Akubra) pursuant to the closure plan for the Troilus mine (the "Closure Plan"), and granting to FQM (Akubra) a royalty of 2.5% of the net smelter returns in connection with all minerals extracted from the property (the "Proposed Transaction"). The royalty granted to FQM (Akubra) will be secured with a first ranking security interest in the claims and the mining lease comprising the Troilus property and production therefrom. The Company has agreed to guarantee the obligations of 8815046 pursuant to the Purchase Agreement, including the net smelter returns royalty. It is anticipated that the 2014 obligations relating to the property will be approximately \$1.4 million.

As a condition precedent to the Proposed Transaction, the Company will be required to post letters of credit in favour of the Ministère des Ressources Naturelles, the Ministère des Finances et de l'économie and the Ministère du Développement Durable, L'Environnement, Faune et Parcs totaling approximately \$4.1 million to secure the performance of the remaining obligations under the Closure Plan (the "Letters of Credit"). First Quantum has agreed to guarantee the Company's obligations pursuant to the Letters of Credit until the earlier of two years from the closing date of the Proposed Transaction or the Company having working capital in excess of \$10 million. The Company has agreed to pay First Quantum a guarantee fee equal to 5% per annum of the aggregate amount of the Letters of Credit outstanding.

Completion of the acquisition remains subject to the satisfaction of certain conditions precedent, including governmental and third party consents and funding.

COPPER ONE INC.

Management's Discussion and Analysis

For the three and six months ended June 30, 2014

Troilus Updated Resource Estimate

On August 6, 2014, the Company provided an updated mineral resource estimate for the Troilus property. The open pit and underground estimates were completed by RPA Inc. (Toronto) utilizing an updated block model and wireframes and input from the Company's geological personnel. Tables 1 and 2 below summarize the resource estimate at Troilus by open pit and underground cut-off grades. Figure 1 shows the relative position of the mineral resources on a geologic map of the Troilus property. The Troilus property is located approximately 175 km by road from the town of Chibougamau, Quebec and consists of 81 mineral claims and one surveyed mining lease that collectively cover 6,422 hectares. The acquisition will include all infrastructures such as roads, power lines, camp buildings, permitted tailings pond, and associated water treatment facilities. The mill was sold and removed during the first phase of reclamation. In consideration for the Troilus property, the Company will grant to FQM (Akubra) a 2.5% net smelter returns royalty and assume all liabilities relating to the project as of January 1, 2014. The Company is working to satisfy the closing conditions under the purchase agreement with First Quantum.

Highlights of the 2014 Troilus mineral resource estimate are as follows:

- Total Indicated resources of 2.28 million (M) ounces of gold and 160 M pounds (lbs) of copper (2.65 Moz gold equivalent);
- Total Inferred resources of 0.85 Moz gold and 48.0 Mlbs of copper (0.96 Moz gold equivalent);
- Open Pit Indicated resources of 1.79 Moz of gold and 128 Mlbs of copper (2.08 Moz gold equivalent);
- Open Pit Inferred resources of 0.44 Moz gold and 27 Mlbs of copper (0.50 Moz gold equivalent);
- Underground Indicated resources of 0.50 Moz gold and 32 Mlbs of copper (0.57 Moz gold equivalent);
- Underground Inferred resources of 0.41 Moz gold and 21 Mlbs of copper (0.45 Moz gold equivalent).

2014 Mineral Resource Estimate Results

The 2014 mineral resource estimate for Troilus defines a near-surface Whittle pit constrained open pit resource and a higher grade underground resource. The resources remain open to future expansion along strike, across strike and particularly down-dip.

COPPER ONE INC.

Management's Discussion and Analysis

For the three and six months ended June 30, 2014

Open Pit Resource Estimate

The open pit resource estimate is constrained within a Whittle open-pit shell (Table 1). The open pit constrained resource estimate is reported at a cut-off grade of 0.3 g/t gold. Total Indicated resources are 60.9 Mt grading 0.91 g/t gold and 0.095% copper for 2.08 Moz gold equivalent. Total Inferred resources are 18.1 Mt grading 0.76 g/t gold and 0.068% copper for 0.50 Moz gold equivalent. These resources are derived from mineralization that was not extracted during previous mining operations at Troilus (1996-2009) and are constrained by a new Whittle pit. The maximum depth of the Whittle constrained open pit resource is 500 metres (m) from surface, an increase in depth of 200 m compared to the actual Z87 open pit. Consequently, substantial resources may be within range of a potential future open pit mining operation at Troilus. More advanced studies are planned to investigate the remaining open pit mining potential at Troilus.

Table 1 - 2014 Troilus Open Pit Mineral Resource Summary

Classification	Zone	Tonnage (t)	Au (g/t)	Cu%	AuEq (g/t)	Contained Gold (oz)	Contained Copper (lb)	Contained AuEq (oz)
Indicated	Z87	46,472,000	0.94	0.111	1.11	1,401,700	113,521,000	1,660,000
Indicated	J4	12,155,700	0.84	0.044	0.91	329,100	11,778,200	356,000
Indicated	J5	2,222,900	0.80	0.052	0.88	56,900	2,530,000	63,000
Indicated	TOTAL	60,850,500	0.91	0.095	1.06	1,787,800	127,829,100	2,079,000
Inferred	Z87	8,159,000	0.82	0.095	0.97	215,000	17,111,000	254,000
Inferred	Z87 Low	3,767,000	0.67	0.045	0.74	81,000	3,730,000	90,000
Inferred	J4	2,947,000	0.85	0.043	0.92	81,000	2,779,000	87,000
Inferred	J5	710,000	0.78	0.059	0.87	18,000	918,000	20,000
Inferred	J4 Low	249,000	0.56	0.049	0.63	4,000	271,000	51,000
Inferred	TOTAL	18,075,000	0.76	0.068	0.86	440,000	27,249,000	502,000

Notes:

1. The Independent Qualified Persons for the mineral resource estimate, as defined by NI43-101, are Luke Evans, P.Eng. and Tudor Ciuculescu, P.Geo. of RPA Inc. (Toronto) and the effective date of the resource estimate is June 30, 2014
2. CIM definitions were followed for Mineral Resources
3. Mineral Resources were estimated at a cut-off grade of 0.3 g/t Au and were constrained by a Whittle pit shell
4. Mineral Resources were estimated using long-term metal prices of US\$1500 per ounce gold and US\$3.50 per pound copper; and an exchange rate of US\$1.00 = C\$1.1
5. A recovery of 83% was used for gold and 92% for copper
6. A block size of 5 m x 5 m x 5 m was used
7. Overall gold grade capping of 10 g/t
8. AuEq = gold assay + copper assay * 1.562
9. Numbers may not add due to rounding
10. Mineral resources that are not Mineral Reserves do not have demonstrated economic viability

COPPER ONE INC.

Management's Discussion and Analysis

For the three and six months ended June 30, 2014

Underground Resource Estimate

The underground resource estimate is reported at a cut-off grade of 0.8 g/t gold and below the base of the Whittle open pits (Table 2). Total Indicated resources are 11.2 Mt grading 1.37 g/t gold and 0.130% copper for 0.57 Moz gold equivalent. Total Inferred resources are 10.9 Mt grading 1.16 g/t gold and 0.088% copper for 0.45 Moz gold equivalent.

Table 2 - 2014 Troilus Underground Mineral Resource Summary

Classification	Zone	Tonnage (t)	Au (g/t)	Cu%	AuEq (g/t)	Contained Gold (oz)	Contained Copper (lb)	Contained AuEq (oz)
Indicated	Z87	11,231,100	1.37	0.130	1.58	496,000	32,139,900	569,000
Indicated	J4	-	-	-	-	-	-	-
Indicated	J5	-	-	-	-	-	-	-
Indicated	TOTAL	11,231,100	1.37	0.130	1.58	496,000	32,139,900	569,000
Inferred	Z87	6,179,000	1.17	0.124	1.36	232,000	16,922,000	270,000
Inferred	J4	4,409,000	1.15	0.040	1.21	163,000	3,889,000	172,000
Inferred	J5	320,000	0.98	0.045	1.05	10,000	318,000	11,000
Inferred	TOTAL	10,908,000	1.16	0.088	1.29	405,000	21,129,000	453,000

Notes:

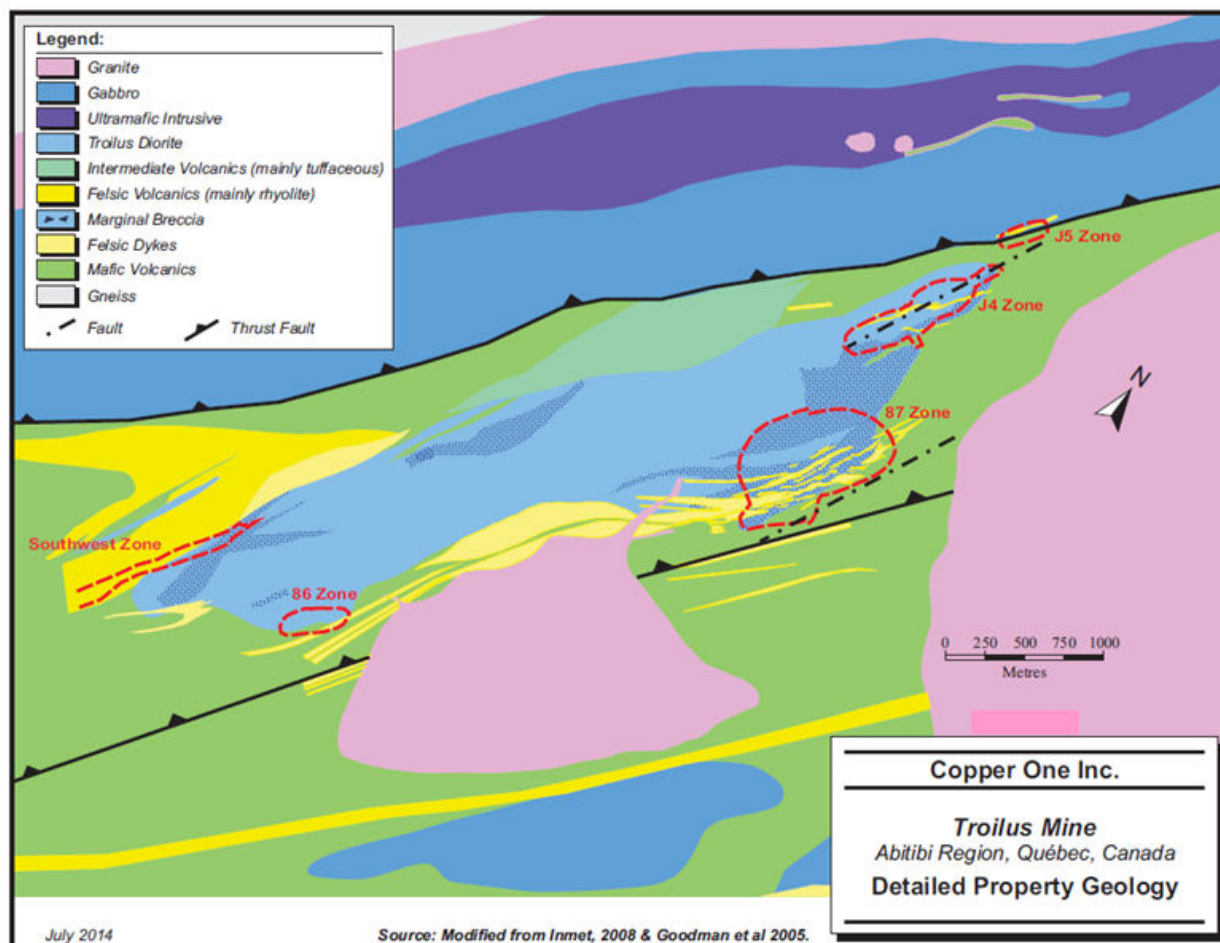
- The Independent Qualified Persons for the mineral resource estimate, as defined by NI43-101, are Luke Evans, P.Eng. and Tudor Ciuculescu, P.Geo. of RPA Inc. (Toronto) and the effective date of the resource estimate is June 30, 2014
- CIM definitions were followed for Mineral Resources
- Mineral Resources were estimated at a cut-off grade of 0.8 g/t Au
- Mineral Resources were estimated using long-term metal prices of US\$1500 per ounce gold and US\$3.50 per pound copper; and an exchange rate of US\$1.00 = C\$1.1
- A recovery of 83% was used for gold and 92% for copper
- A block size of 10 m by 10 m by 10 m was used for Z87 and 5 m by 5 m by 5 m was used for J4 and J5
- Overall gold grade capping of 10 g/t
- AuEq = gold assay + copper assay * 1.562
- Numbers may not add due to rounding
- Mineral Resources that are not Mineral Reserves do not have demonstrated economic viability

COPPER ONE INC.

Management's Discussion and Analysis

For the three and six months ended June 30, 2014

Figure 1 - Geology map of the Troilus property showing the relative position and size of the main Z87 Zone and the satellite J4 and J5 Zones. The Southwest Zone and the 86 Zone, also hosted in the Troilus Diorite, are exploration targets.



Drilling Database and Estimation Approach

The drill hole databases utilized for this resource estimate contain drill hole collar, survey, assay and lithology data as of June 30, 2014. There have been no new holes drilled at Z87 and J4-J5 since 2006. The Z87 open pit and J4-J5 open pit and underground database includes 645 drill holes with a total length of 127,500 m, 70,440 assays and 39,670 three metre composites. A 5 m by 5 m by 5 m percent block model was created in Geovia GEMS 6.6. The Z87 underground database includes 101 surface diamond holes with a total length of 48,390 m, 16,000 assays, and 1,149 three metre composites. A 10 m by 10 m by 10 m percent underground block model was created in Gemcom 4.02. High grade gold assays are capped at 10 g/t Au for the Z87 and J4-J5 zones.

For the open pit resources at Z87 and at J4-J5 and for the underground resources at J4-J5, the deeper intersections drilled since 2003 were utilized to extend the Z87 Zone mineralization wireframes farther down dip based on a 0.3 g/t Au cut-off grade. The J4 Zone mineralized wireframe from the 2003 resource estimate, based on a 0.3 g/t Au cut-off grade, was expanded for the 2014 estimate to include six

COPPER ONE INC.

Management's Discussion and Analysis

For the three and six months ended June 30, 2014

additional mineralized lenses. A new mineralized wireframe based on a 0.3 g/t Au cut-off grade was built for the J5 Zone, which had never been modelled previously. In addition two low grade domains were created outside the mineralized wireframes at Z87 and J4-J5. The low grade domains capture material above cut-off grade that is not continuous enough to wireframe. The underground resources for Z87 are based on the 0.8 g/t Au mineralized wireframe created for the 2006 resource estimate.

The mineral resource estimate was generated by inverse distance squared grade interpolation. Ordinary kriging was employed as an alternative interpolation method for gold and copper, for comparison and validation purposes. The mineralized blocks were classified into the Indicated or Inferred resource category based on geological continuity, location relative to the range of influence defined in the variography, and search ellipse ranges. Validation of the block models involved visual inspection and comparison on plan and section of interpolated grades and composites, statistical comparison of resource assays and interpolated blocks, and swath plots.

Resource Expansion and Exploration Upside

The Z87, J4 and J5 mineralized zones remain open to expansion, particularly at depth. In J4, gold grade contouring suggests that the mineralization thickens down plunge, which means that there is a good potential for discovery of higher grade gold mineralization below 200 m vertical depth. Drilling in 1999 and 2000 confirmed that the gold mineralization extends down plunge, where a hole intersected 24 m averaging 4.95 g/t Au from 276 m down hole, which includes 3 m grading 34.7 g/t Au.

Compilation of data for holes drilled outside the main mineralized zones on the Troilus property indicates that there are a number of holes with gold values greater than 0.2 g/t over 10 m. A 500 m long gold anomaly named the Southwest Zone (Figure 1), with similar characteristics to Z87 was discovered in 2000, 3 km south-southwest from Z87 at the southwest end of the Troilus Diorite. One hole drilled in 2005 intersected 56 m grading 0.9 g/t Au from 130 m downhole, including 34 m grading 1.3 g/t Au. Thick overburden prevented testing of the full extent of the zone. Additional diamond drilling is warranted and a major exploration program is planned to test the upside potential of this zone and others like it on the Troilus Property.

For additional details regarding the updated mineral resource estimate, please see the technical report dated entitled "Technical Report on the Troilus Gold-Copper Mine Mineral Resource Estimate, Quebec, Canada" dated July 25, 2014 and prepared for Copper One by RPA Inc. (Toronto). The technical report is filed under Copper One's profile on SEDAR (www.sedar.com) and is available on Copper One's website.

The mineral resource estimate reported in this updated mineral resource estimate was prepared by Mr. Luke Evans, P.Eng., and Mr. Tudorel Ciuculescu, P.Geo., of RPA Inc. (Toronto) who are "Qualified Persons" as defined in National Instrument 43-101 and independent with respect to Copper One.

The scientific and technical information in this updated mineral resource estimate was reviewed and approved by Dr. William Stone, P.Geo., Copper One's Chief Consulting Geologist and a Qualified Person as defined in National Instrument 43-101

Company Outlook

The management of Copper One is focused on the development of its primary assets in the Province of Quebec, namely its Rivière Dore project and Queylus project. The Company has also entered into a definitive agreement to acquire the past producing Troilus mine from First Quantum Minerals Ltd.

The Company continues to engage the Barrier Lake Algonquins ("ABL") to permit re-activation of the Rivière Dore claims which are currently under suspension with the Quebec Ministry of Natural resources. Under the terms of the suspension, Copper One Inc is precluded from conducting any exploration of the

COPPER ONE INC.

Management's Discussion and Analysis

For the three and six months ended June 30, 2014

Rivière Dore claims. Once Copper One is in a position to enter into a Memorandum of Understanding with ABL, it can then request the lifting of the claim suspensions and proceed with exploration activities. Copper One has no information at this time regarding whether or not a MOU can be entered into in 2014. The Company will continue its vigorous attempts to engage the ABL in a manner consistent with its values regarding shareholder value and good corporate governance and social responsibility.

As the Company cannot determine if Rivière Dore will proceed in the near term, it began negotiations with First Quantum Minerals Ltd in 2013 for the acquisition of the Troilus mine, previously operated by Inmet Mining prior to closure in 2010. The Troilus mine is located near Chibougamau in the Province of Quebec, and operated from 1997 to 2010. The Troilus mine produced over 2 million ounces of gold and over 50,000 tonnes of copper from two open pits, namely the J4 pit and the Z87 pit. The J4 pit was only mined to a depth of approximately 100m and the Z87 pit was mined to approximately 300m.

See highlights of the 2014 Troilus mineral resource estimate section of this report.

The Company is working to design a drill program following completion of the acquisition of Troilus property from First Quantum Minerals.

Disposition of Discontinued Operations

On August 22, 2013, the Company completed the sale of its wholly-owned subsidiary Copper USA to Cornerstone and received in consideration 2,250,000 common shares of Cornerstone valued at \$202,500, plus additional consideration tied to specific properties (see note (i) below). As the additional consideration is contingent in nature, no value has been assigned to these items. The value of the contingent assets, if any, will be recorded in the period in which the value is determined. Cornerstone was a related party by virtue of Mr. Paul Cowley being on the board of both the Company and Cornerstone. 750,000 of the 2,250,000 Cornerstone shares issued are subject to a voluntary twelve-month hold period expiring on August 22, 2014. In connection with the sale of Copper USA, the Company and Cornerstone have exchanged certain representations and warranties and have agreed to indemnify each other against losses in connection with a breach of any representation or warranty up to a maximum of \$25,000.

The assets and liabilities related to Copper USA as at June 30, 2014 and 2013 were as follows:

	June 30, 2014	June 30, 2013
	\$	\$
Assets		
Reclamation bonds (i)	-	67,500
Exploration and evaluation assets (ii)	-	135,000
Property and equipment	-	232
	-	202,732
Liabilities		
Accounts payable and accrued liabilities	-	10,118
	-	10,118

The following represents the amounts reclassified to net loss from discontinued operations at June 30, 2014 and 2013:

COPPER ONE INC.

Management's Discussion and Analysis

For the three and six months ended June 30, 2014

	June 30, 2014	June 30, 2013
	\$	\$
Impact on statement of operations and comprehensive loss:		
Revenues	-	-
Operating expenses	-	(35,478)
Loss before other income (expenses)	-	(35,478)
Write-down of exploration and evaluation assets	-	(4,030,038)
Gain (loss) before tax	-	(4,065,516)
Income tax expense	-	-
Net (loss) from discontinued operations	-	(4,065,516)
Gain (loss) per share from discontinued operations - basic and diluted	-	(0.06)

The Company recorded a cumulative loss on discontinued operations of \$4,049,382 as at December 31, 2013.

(i) Additional consideration from Cornerstone, tied to specific properties:

1. within 30 days of completing a Feasibility Study in respect of the Lone Mountain property, Cornerstone will:
 - a. issue to the Company 2,000,000 Cornerstone common shares;
 - b. pay to the Company \$1,000,000 in cash or shares at the Company's option; and
 - c. grant to the Company a 0.5% net smelter return royalty capped at \$5,000,000, which may be repurchased by Cornerstone for \$1,000,000 in cash or shares at the Company's option;
2. within 30 days of completing a Feasibility Study in respect of the West Jerome property, Cornerstone will:
 - a. issue to the Company 500,000 Cornerstone common shares;
 - b. pay to the Company \$750,000 in cash or shares at the Company's option; and
 - c. grant to the Company a 0.5% net smelter return royalty capped at \$4,000,000, which may be repurchased by Cornerstone for \$800,000 in cash or shares at the Company's option;
3. within 30 days of completing a Feasibility Study in respect of any of the other properties, Cornerstone will:
 - a. issue to the Company 350,000 Cornerstone common shares;
 - b. pay to the Company \$375,000 in cash or shares at the Company's option; and
 - c. grant to the Company a 0.5% net smelter return royalty capped at \$3,000,000, which may be repurchased by Cornerstone for \$350,000 in cash or shares at the Company's option.

COPPER ONE INC.

Management's Discussion and Analysis

For the three and six months ended June 30, 2014

(ii) Exploration and evaluation assets

	Lone Mountain \$	LT Ranch \$	Mimbres \$	Teague Springs \$	Twin Peaks \$	West Jerome \$	West Safford \$	Total \$
Balance December 31, 2011	3,207,471	400,480	199,340	200,658	478,158	337,549	317,887	5,141,543
Property acquisition	50,000	49,565	-	-	-	-	-	99,565
Surveying and geophysics	60,463	39,563	-	-	7,501	1,303	-	108,830
Crilling	3,147	-	-	-	-	-	-	3,147
Claim and maintenance	16,912	-	12,360	14,359	12,820	19,253	25,367	101,071
Impairment write downs	-	-	(211,700)	(215,017)	(498,479)	(358,105)	(343,254)	(1,626,555)
Balance, December 31, 2012	3,337,993	489,608	-	-	-	-	-	3,827,601
Property acquisition	-	106,271	-	-	-	-	-	106,271
Surveying and geophysics	25,443	-	-	-	4,699	-	-	30,142
Claim and maintenance	1,842	-	-	-	-	-	-	1,842
Impairment write downs	(3,230,278)	(595,879)	-	-	4,699	-	-	(3,830,856)
Disposition of discontinued operations	(135,000)	-	-	-	-	-	-	(135,000)
Balance, December 31, 2013 and June 30, 2014	-	-	-	-	-	-	-	-

Summarized Financial Results

Selected Quarterly Financial Information

(Expressed in Canadian dollars \$)	30-Jun-14	31-Mar-14	31-Dec-13	30-Sep-13	30-Jun-13	31-Mar-13	31-Dec-12	30-Sep-12
Net income (loss)	(690,997)	(342,893)	(630,197)	(433,320)	(437,695)	(4,389,811)	(2,072,427)	(392,053)
Per share - basic and diluted (from continuing operations)	(0.01)	(0.01)	(0.01)	(0.01)	(0.01)	(0.07)	(0.03)	(0.01)
Total assets	3,838,264	4,009,435	4,464,283	5,049,016	5,431,951	6,064,542	10,772,692	12,261,913
Working capital *	134,455	743,741	804,882	1,404,372	1,683,404	2,374,247	2,968,576	4,383,520

* see Non-GAAP measures

Liquidity and Capital Resources

The Company does not have any operating assets that generate revenues. The Company incurred a net loss from its continuing operations of \$1,033,890 for the six months ended June 30, 2014 (June 30, 2013 – net loss from its continuing operations of \$761,990) and incurred a net cash outflow of \$592,817 from its operating activities (June 30, 2013 - net cash outflow of \$868,363).

The Company has a need for financing for working capital. As a result of continuing operating losses, the Company's continuance as a going concern is dependent upon its ability to obtain adequate financing and to reach profitable levels of operation.

Working Capital

As at June 30, 2014, the Company has net working capital (see Non-GAAP measures) of \$134,455 (June 30, 2013 – net working capital of \$1,683,404).

There are no off-balance sheet financing arrangements.

COPPER ONE INC.

Management's Discussion and Analysis

For the three and six months ended June 30, 2014

Carrying Value of Balance Sheet Items

The Company is carrying investments that include 2,250,000 common shares of Cornerstone recorded at a fair value of \$90,000 at June 30, 2014. This investment is classified as held-for-trading.

Total accounts payable as at June 30, 2014 were \$508,230 (June 30, 2013 - \$278,601).

Cash Flows

Cash Flows for the three months ended June 30, 2014 and 2013

(Expressed in Canadian dollar \$)	For the quarter ended	
	June 30,	
	2014	2013
Net cash provided by (used in) operating activities	\$ 217,878	\$ (436,052)
Net cash (used in) investing activities	(183,944)	(407,730)
Increase (decrease) in cash and cash equivalents	33,934	(843,782)

Cash of \$217,878 provided by operating activities during the three months ended June 30, 2014 compared to \$436,052 used in operating activities during the three months ended June 30, 2013 primarily due to changes in working capital items. See Non-GAAP measures.

Cash of \$183,944 was used in investing activities during the three months ended June 30, 2014 compared to \$407,730 primarily used in expenditures on exploration and evaluation assets.

Cash Flows for the six months ended June 30, 2014 and 2013

(Expressed in Canadian dollar \$)	For the six months ended	
	June 30,	
	2014	2013
Net cash generated by (used in) operating activities	\$ (592,817)	\$ (868,363)
Net cash generated by (used in) investing activities	90,084	(1,021,232)
Decrease in cash and cash equivalents	(502,733)	(1,889,595)

Cash of \$592,817 used in operating activities during the six months ended June 30, 2014 was lower than the \$868,363 used in operating activities during the six months ended June 30, 2013 primarily due to changes in working capital items. During the six months ended June 30, 2014 working capital items provided \$167,694 compared to a use of \$96,884 during the same period in 2013. See Non-GAAP measures.

Cash of \$90,084 was provided in investing activities during the six months ended June 30, 2014 compared to \$1,021,232 primarily used in expenditures on exploration and evaluation assets.

COPPER ONE INC.

Management's Discussion and Analysis

For the three and six months ended June 30, 2014

Results of Operations

For the three months ended June 30, 2014 and 2013

	Three months ended June 30,	
	2014	2013
Operating expenses		
Management and consulting fees	\$ 302,764	\$ 194,995
Share-based payments	265,655	-
Directors' fees	31,410	46,349
Office and rent	40,933	74,313
Investor relations	26,135	44,392
Travel and promotion	1,093	9,717
Accounting and legal	11,906	11,198
Regulatory and transfer agent	550	6,591
Amortization	-	14,331
Foreign exchange (gain) loss	36	(6,562)
Total operating expenses	680,482	395,324
Loss before other income (expenses)	(680,482)	(395,324)
Other income (expenses)		
Interest income	2,385	6,460
Other income	9,600	-
Unrealized gain on held for trading investments	(22,500)	-
Loss before discontinued operations	(690,997)	(388,864)
Loss from discontinued operations	-	(48,831)
Net loss for the period	(690,997)	(437,695)
Net loss and comprehensive loss for the period	\$ (690,997)	\$ (437,695)

The Company recorded a comprehensive loss of \$690,997 during the three months ended June 30, 2014 compared to a loss of \$437,695 during the same period of 2013. The comprehensive loss during the three months ended June 30, 2014 resulted primarily from management and consulting fees, share-based payments, office and rent expenses, directors' fees and investor relations. The comprehensive loss during the three months ended June 30, 2013 resulted primarily from management and consulting fees, office and rent expenses, directors' fees, investor relations and loss on discontinued operations as discussed in the Disposition of Discontinued Operations section of this report.

COPPER ONE INC.

Management's Discussion and Analysis

For the three and six months ended June 30, 2014

For the six months ended June 30, 2014 and 2013

	Six months ended June 30,	
	2014	2013
Operating expenses		
Management and consulting fees	\$ 502,680	\$ 422,334
Share-based payments	273,379	16,933
Directors' fees	61,410	89,718
Office and rent	82,099	98,313
Investor relations	31,535	86,146
Travel and promotion	61,877	21,046
Accounting and legal	26,680	23,854
Regulatory and transfer agent	6,869	11,392
Amortization	-	22,761
Foreign exchange (gain) loss	(6)	(14,250)
Total operating expenses	1,046,523	778,247
Loss before other income (expenses)	(1,046,523)	(778,247)
Other income (expenses)		
Interest income	3,033	16,257
Other income	9,600	-
Loss before discontinued operations	(1,033,890)	(761,990)
Impairment loss on discontinued operations	-	(4,065,516)
Net loss for the period	(1,033,890)	(4,827,506)
Net loss and comprehensive loss for the period	\$ (1,033,890)	\$(4,827,506)

The Company recorded a comprehensive loss of \$1,033,890 during the six months ended June 30, 2014 compared to a loss of \$4,827,506 during the same period of 2013. The comprehensive loss during the six months ended June 30, 2014 resulted primarily from management and consulting fees, share-based payments, office and rent expenses, directors' fees, travel and promotion and investor relations. The comprehensive loss during the six months ended June 30, 2013 resulted primarily from management and consulting fees, office and rent expenses, directors' fees, investor relations and loss on discontinued operations as discussed in the Disposition of Discontinued Operations section of this report.

COPPER ONE INC.

Management's Discussion and Analysis

For the three and six months ended June 30, 2014

Exploration and Evaluation Expenditures

The exploration and evaluation assets of the Company are comprised as follows:

	Rivière Doré	Queylus	Troilus	Total
	\$	\$	\$	\$
Balance, December 31, 2012	1,244,534	1,582,008	-	2,826,542
Property acquisition	-	15,630	-	15,630
Surveying and geophysics	-	82,956	-	82,956
Consulting	38,750	-	-	38,750
Travel & accomodation	16,530	-	-	16,530
Claims & maintenance	-	6,261	-	6,261
Legal	45,382	2,038	-	47,420
Sampling	-	11,424	-	11,424
Drilling	-	240,150	-	240,150
Balance, December 31, 2013	1,345,196	1,940,467	-	3,285,663
Legal	300	-	87,566	87,866
Consulting	-	-	93,533	93,533
Claims & maintenance	-	5,600	-	5,600
Travel & accomodation	-	-	2,545	2,545
Government assistance	(142,304)	(146,643)	-	(288,947)
Other	9,319	-	-	9,319
Balance, June 30, 2014	1,212,511	1,799,424	183,644	3,195,579

The Company has received approximately \$289,000 in government assistance receivable related to eligible expenditures in the province of Québec for the years ended December 31, 2011 and December 31, 2012.

Rivière Doré

On November 30, 2011, the Company signed an agreement with Cartier Resources Inc. ("Cartier") to acquire 100% of the Rivière Doré Copper Nickel property ("Rivière Doré") located southeast of the town Val D'Or, Quebec. This agreement superseded the agreement signed with Cartier in January 2011. In consideration for a 100% interest in Rivière Doré, the Company paid \$150,000 in cash, issued 2,000,000 common shares of the Company with an estimated fair value of \$550,000 and granted a royalty of 1% of the net smelter return in connection with ore extracted from the property. The Company is also committed to a 2% royalty payment of the net smelter return on 36 of its 1,052 existing claims on the property. This transaction closed on December 15, 2011.

The Company has also agreed to pay to Cartier an amount equal to 2% of the net present value shown in a bankable feasibility study on Rivière Doré, payable in cash in three equal installments over the 18-month period from the commencement of commercial production on the property.

There has been a suspension on the existing claims comprising the Rivière Doré property since 2011 as a result of discussions between the Company, government officials and the Algonquin Community of Barriere Lake ("ACBL") in relation to the property. The suspension term is scheduled to end in July 2015. The ACBL reaffirmed through a press release on March 13, 2013, their opposition to the Company's proposed exploration activities related to the Rivière Doré project.

COPPER ONE INC.

Management's Discussion and Analysis

For the three and six months ended June 30, 2014

Queylus

On January 23, 2012, the Company entered into an agreement with Lounor Exploration Inc. ("Lounor") to acquire 100% of the Queylus copper gold property, located near the town of Chibougamau, Quebec. Under the terms of the purchase agreement, the Company acquired 100% of the Queylus property by paying \$23,750, issuing 475,000 common shares of the Company valued at \$61,750 and granting royalties ranging from 1% to 2% of the net smelter return in connection with ore extracted from certain claims comprising the property. In connection with the transactions contemplated under the purchase agreement, the Company entered into an agreement with SOQUEM Inc. ("SOQUEM") whereby SOQUEM agreed to renounce its right of first refusal over certain claims comprising the Queylus property in consideration for the Company paying \$2,500 and issuing to SOQUEM 50,000 shares of the Company valued at \$6,500. This transaction closed on August 7, 2012.

On February 8, 2012 the Company signed a purchase agreement with Diagnos Inc. ("Diagnos") to acquire a 100% interest in certain claims (the "Claims") contiguous to the Queylus copper gold property. Under the terms of the purchase agreement, the Company has acquired 100% of the Claims by paying \$10,000, issuing 175,000 common shares of the Company valued at \$52,500 and granting a royalty of 2% of the net smelter return in connection with ores and concentrates extracted from the property underlying the Claims. The purchase agreement provides that the Company has the right to reduce such royalty from 2% to 1% at any time by paying to Diagnos \$1,000,000 in cash.

Drilling Results

On February 26, 2013, the Company announced the results for the Fall 2012 diamond drilling program on the Queylus property. Please refer to the press release dated February 26, 2013 filed under the Company's profile on SEDAR (www.sedar.com). The goal of the Fall 2012 drilling program was to test several coincident induced polarization ("IP") and magnetic anomalies that were previously outlined for copper and precious metals. A total of 4,002 metres of diamond drilling from 17 NQ size holes was performed by a local contractor, Forages Chibougamau of Chibougamau, Quebec.

Financial Commitments and Contractual Obligations

Summary of contractual obligations at June 30, 2014 is detailed in the table below.

Contractual Obligations	Payments (Receipts) Due by Period				
	Total	Less than 1 Year	1 – 3 Years	4 – 5 Years	After 5 Years
Minimum commitment under management contracts (i)	\$ 402,141	\$ 402,141	-	-	-
Minimum commitment under Montreal office space lease (ii)	292,000	130,000	162,000	-	-
Minimum commitment under Montreal office sub-lease (iii)	(234,000)	(104,000)	(130,000)	-	-
Total	\$460,141	\$428,141	\$32,000	-	-

- (i) The Company is party to certain management contracts. These contracts contain clauses requiring additional payments of up to approximately \$1,080,000 be made upon the occurrence of certain events such as a change of control. As a triggering event has not taken place, the contingent payments have not been reflected in these consolidated financial

COPPER ONE INC.

Management's Discussion and Analysis

For the three and six months ended June 30, 2014

- statements. Additional minimum management contract commitments remaining under these contracts approximate \$402,141 due within one year.
- (ii) In June 2012, the Company entered into a 52 month lease agreement for office space rental in Montreal, ending on September 30, 2016. The total commitments remaining under this lease agreement is approximately \$292,000 at June 30, 2014.
 - (iii) In December 2013, the Company signed a sublease agreement with a third party to rent out the Montreal office space, ending on September 30, 2016. Total rent receivable over the term of the sublease is expected to be approximately \$234,000.

The Company's exploration and evaluation activities are subject to various laws and regulations governing the protection of the environment. These laws and regulations are continually changing and generally becoming more restrictive. The Company conducts its operations so as to protect public health and the environment and believes its operations are materially in compliance with all applicable laws and regulations. The Company has made, and expects to make in the future, expenditures to comply with such laws and regulations.

Transactions with Related Parties

During the three and six months ended June 30, 2014 and 2013, the Company entered into the following transactions in the ordinary course of business with related parties that are not subsidiaries of the Company.

	Purchases of goods and services			
	Three months ended June 30,		Six months ended June 30,	
	2014	2013	2014	2013
Forbes & Manhattan, Inc.	\$ 75,000	\$ 75,000	\$ 150,000	\$ 150,000

Mr. Stan Bharti is the Executive Chairman of Forbes & Manhattan, Inc. As the Company is part of the Forbes & Manhattan Group of Companies, it continues to receive the benefits of such membership, including access to mining professionals, advice from Mr. Bharti, and strategic advice from Forbes & Manhattan Board of Advisors.

The Company shares its office space with other companies who may have similar officers or directors. The costs associated with this space, including the provision of office equipment and supplies, are administered by 2227929 Ontario Inc, to whom the Company pays a monthly fee. 2227929 Ontario Inc. does not have any officers or directors in common with the Company.

The following balances were outstanding at the end of the reporting period:

	Amounts owed to related parties		Amounts owed by related parties	
	Three months ended June 30,		Six months ended June 30,	
	2014	2013	2014	2013
Forbes & Manhattan, Inc.	\$ 28,250	-	\$ -	-

Mr. Paul Cowley is on the board of both the Company and Cornerstone, purchaser of the Company's formerly wholly-owned subsidiary Copper USA (see note 6 of the unaudited condensed interim financial statements).

COPPER ONE INC.

Management's Discussion and Analysis

For the three and six months ended June 30, 2014

Compensation of Key Management, Directors and Officers

The remuneration of directors and other members of key management personnel during three months ended March 31, 2014 and 2013 were as follows:

	Six months ended June 30,	
	2014	2013
Short-term benefits	\$ 195,000	\$ 247,498
Share-based payments	195,324	16,933

In accordance with IAS 24, key management personnel are those persons having authority and responsibility for planning, directing and controlling the activities of the Company directly or indirectly, including directors (executive and non-executive) of the Company.

All of the above transactions have been in the normal course of operations and have been recorded at their exchange amount, which are actual amounts spent by the transacting parties.

Changes in Board of Directors

On May 14, 2014, the Company announced the appointment of Mr. Benoit Gascon to its Board of Director.

Off Balance Sheet Arrangements

To the best of management's knowledge, there are no off-balance sheet arrangements that have, or are reasonably likely to have, a current or future effect on the results of operations or financial condition of the company.

Financial Instruments

The Company's financial instruments consist of cash and cash equivalents, held for trading investments, receivable, and accounts payable and accrued liabilities. Unless otherwise noted, it is management's opinion that the Company is not exposed to significant interest, currency or credit risks arising from these financial instruments. The carrying values of these financial instruments approximate their fair values due to the short maturity of those instruments. See Note 14 of the Financial Statements.

Outstanding Share Data

As at the date of this report, there were 66,533,854 common shares outstanding, 14,070,000 stock options outstanding with a weighted average exercise price of \$0.24 per share.

Non-GAAP Measures

The MD&A contains the term working capital. The Company believes that, in addition to conventional measures prepared in accordance with GAAP, we and certain investors use this information to evaluate the Company's performance and ability to generate cash, profits and meet financial commitments. These Non-GAAP measures are intended to provide additional information and should not be considered in isolation or as a substitute for measures of performance prepared in accordance with GAAP.

COPPER ONE INC.

Management's Discussion and Analysis

For the three and six months ended June 30, 2014

Working Capital

	June 30, 2014		June 30, 2013	
Current assets				
Cash and cash equivalents	\$	351,934	\$	1,538,555
Marketable securities		90,000		-
Receivables		158,853		393,804
Prepaid expenses and deposits		41,898		29,646
Total current assets		642,685		1,962,005
Current liabilities				
Accounts payable and accrued liabilities	\$	508,230	\$	278,601
Total liabilities		508,230		278,601
Working capital (current assets less current liabilities)	\$	134,455	\$	1,683,404

Net cash (used in) operating activities

(Expressed in Canadian dollars \$)	Three months ended June 30,		Six months ended June 30,	
	2014	2013	2014	2013
Cash (used in) operating activities before change in working capital items	\$ (402,842)	\$ (404,061)	\$ (760,511)	\$ (771,479)
Cash provided by (used in) change in working capital items	620,720	(31,991)	167,694	(96,884)
Net cash provided by (used in) operating activities	\$ 217,878	\$ (436,052)	\$ (592,817)	\$ (868,363)

Additional Disclosure for Venture Issuers without Significant Revenue

The Company has expensed the following material cost components in continued operations:

(Expressed in Canadian dollars \$)	Three months ended June 30,		Six months ended June 30,	
	2014	2013	2014	2013
Management and consulting fees	\$ 302,764	\$ 194,995	\$ 502,680	\$ 422,334
Director fees	31,410	46,349	61,410	89,718
Shared-based payments	265,655	-	273,379	16,933

The transactions were conducted in the normal course of operations, on commercial terms established and agreed to by the parties, and were recorded at the exchange amount.

COPPER ONE INC.

Management's Discussion and Analysis

For the three and six months ended June 30, 2014

New Accounting Policies

The Company has adopted the following new standards, along with any consequential amendments, effective January 1, 2014. These changes were made in accordance with the applicable transitional provisions.

IAS 32 – Financial Instruments: Presentation (“IAS 32”) was amended by the IASB in December 2011 to clarify certain aspects of the requirements on offsetting. The amendments focus on the criterion that an entity currently has a legally enforceable right to set off the recognized amounts and the criterion that an entity intends either to settle on a net basis, or to realize the asset and settle the liability simultaneously. The adoption of this standard did not result in any changes to the Company's condensed interim consolidated financial statements.

IAS 36 – Impairments of Assets (“IAS 36”) was amended by the IASB in May 2013 to clarify the requirements to disclose the recoverable amounts of impaired assets and require additional disclosures about the measurement of impaired assets when the recoverable amount is based on fair value less costs of disposal, including the discount rate when a present value technique is used to measure the recoverable amount. The adoption of this standard did not result in any changes to the Company's condensed interim consolidated financial statements.

IAS 39 – Financial Instruments: Recognition and Measurement (“IAS 39”) was amended by the IASB in June 2013 to clarify that novation of a hedging derivative to a clearing counterparty as a consequence of laws or regulations or the introduction of laws or regulations does not terminate hedge accounting. The adoption of this standard did not result in any changes to the Company's condensed interim consolidated financial statements.

Future Accounting Standards and Interpretations

IFRS 9 – Financial Instruments (“IFRS 9”) was issued by the IASB in November 2009 with additions in October 2010 and May 2013 and will replace IAS 39 Financial Instruments: Recognition and Measurement (“IAS 39”). IFRS 9 uses a single approach to determine whether a financial asset is measured at amortized cost or fair value, replacing the multiple rules in IAS 39. The approach in IFRS 9 is based on how an entity manages its financial instruments in the context of its business model and the contractual cash flow characteristics of the financial assets. Most of the requirements in IAS 39 for classification and measurement of financial liabilities were carried forward unchanged to IFRS 9, except that an entity choosing to measure a financial liability at fair value will present the portion of any change in its fair value due to changes in the entity's own credit risk in other comprehensive income, rather than within profit or loss. The new standard also requires a single impairment method to be used, replacing the multiple impairment methods in IAS 39. IFRS 9 is effective for annual periods beginning on or after January 1, 2018. Earlier adoption is permitted.

Critical Judgments and Estimation Uncertainties

The preparation of the Company's Consolidated Financial Statements in conformity with IFRS requires management to make estimates and assumptions that affect the reported amounts of assets and liabilities and disclosure of contingent assets and liabilities at the date of the Consolidated Financial Statements and reported amounts of expenses during the reported period. Such estimates and assumptions affect the carrying value of assets, impact decisions as to when exploration and development costs should be capitalized or expensed, and affect estimates for provisions for reclamation costs. Other significant estimates made by the Company include factors affecting valuations of stock

COPPER ONE INC.

Management's Discussion and Analysis

For the three and six months ended June 30, 2014

based compensation and the valuation of income tax accounts. The Company regularly reviews its estimates and assumptions, however, actual results could differ from these estimates and these differences could be material. See Note 3 of the Financial Statements for detail.

Risks and Uncertainties

The Company is engaged in the exploration and development of mineral properties. These activities involve a high degree of risk which, even with a combination of experience, knowledge and careful evaluation, may not be overcome. Consequently, no assurance can be given that commercial quantities of minerals will be successfully found or produced.

Liquidity Concerns and Future Financings

The Company will require significant capital and operating expenditures in connection with the development of its properties. There can be no assurance that the Company will be successful in obtaining required financing as needed. Volatile markets may make it difficult or impossible for the Company to obtain debt financing or equity financing on favorable terms, if at all. Failure to obtain additional financing on a timely basis may cause the Company to postpone or slow down its development plans, forfeit rights in some or all of its properties or reduce or terminate some or all of its activities.

While the Company's financial statements have been prepared on the basis of a going concern which contemplates the realization of assets and satisfaction of liabilities in the normal course of operations, there are conditions and events that may cast doubt about the validity of that assumption.

Nature of Mining, Mineral Exploration and Development Projects

Mining operations generally involve a high degree of risk. The Company's operations are subject to the hazards and risks normally encountered in mineral exploration, development and production, including environmental hazards, explosions, unusual or unexpected geological formations or pressures and periodic interruptions in both production and transportation due to inclement or hazardous weather conditions. Such risks could result in damage to, or destruction of, mineral properties or producing facilities, personal injury, environmental damage, delays in mining, monetary losses and possible legal liability.

The Company's property interests are located in remote, undeveloped areas and the availability of infrastructure such as surface access, skilled labour, fuel and power at an economic cost, cannot be assured. These are integral requirements for exploration, development and production facilities on mineral properties. Power may need to be generated on site.

Mineral exploration is highly speculative in nature. There is no assurance that exploration efforts will be successful. Even when mineralization is discovered, it may take several years until production is possible, during which time the economic feasibility of production may change. Substantial expenditures are required to establish proven and probable mineral reserves through drilling. Because of these uncertainties, no assurance can be given that exploration programs will result in the establishment or expansion of mineral resources or mineral reserves. There is no certainty that the expenditures made by the Company towards the search and evaluation of mineral deposits will result in discoveries or development of commercial quantities of ore.

Exploration and development projects have no operating history upon which to base estimates of future cash operating costs. For development projects, reserve and resource estimates and estimates of cash operating costs are, to a large extent, based upon the interpretation of geologic data obtained from drill

COPPER ONE INC.

Management's Discussion and Analysis

For the three and six months ended June 30, 2014

holes and other sampling techniques, and feasibility studies, which derive estimates of cash operating costs based upon anticipated tonnage and grades of ore to be mined and processed, ground conditions, the configuration of the ore body, expected recovery rates of minerals from the ore, estimated operating costs, anticipated climatic conditions and other factors. As a result, actual production, cash operating costs and economic returns could differ significantly from those estimated. Indeed, there have been a number of mining operations that have ceased or been suspended or delayed because operations costs are greater than projected. Current market conditions are forcing many mining operations to increase capital and operating cost estimates. It is not unusual for new mining operations to experience problems during the start-up phase, and delays in the commencement of production often can occur.

No Revenues

To date the Company has recorded no revenues from operations and the Company has not commenced commercial production or development on any property. There can be no assurance that significant losses will not occur in the near future or that the Company will be profitable in the future. The Company's operating expenses and capital expenditures may increase in subsequent years in relation to the engagement of consultants, personnel and equipment associated with advancing exploration, development and commercial production of the Company's properties. The Company expects to continue to incur losses for the foreseeable future. The development of the Company's properties will require the commitment of substantial resources to conduct time-consuming exploration. There can be no assurance that the Company will generate any revenues or achieve profitability.

Mineral Resource and Mineral Reserve Estimates May be Inaccurate

There are numerous uncertainties inherent in estimating mineral resources and mineral reserves, including many factors beyond the control of the Company. Such estimates are a subjective process, and the accuracy of any mineral resource or mineral reserve estimate is a function of the quantity and quality of available data and of the assumptions made and judgments used in engineering and geological interpretation. These amounts are estimates only and the actual level of mineral recovery from such deposits may be different. Differences between management's assumptions, including economic assumptions such as metal prices and market conditions, could have a material adverse effect on the Company's financial position and results of operations.

Licenses and Permits, Laws and Regulations

The Company's exploration and development activities, including mine, mill, road, rail and other transportation facilities, require permits and approvals from various government authorities, and are subject to extensive federal, provincial, state and local laws and regulations governing prospecting, development, production, exports, taxes, labour standards, occupational health and safety, mine safety and other matters. Such laws and regulations are subject to change, can become more stringent and compliance can therefore become more costly. In addition, the Company may be required to compensate those suffering loss or damage by reason of its activities. There can be no guarantee that the Company will be able to maintain or obtain all necessary licenses, permits and approvals that may be required to explore and develop its properties, commence construction or operation of mining facilities.

COPPER ONE INC.

Management's Discussion and Analysis

For the three and six months ended June 30, 2014

Mineral Commodity Prices

The profitability of the Company's operations will be dependent upon the market price of mineral iron ore. Iron ore prices fluctuate widely and are affected by numerous factors beyond the control of the Company. The level of interest rates, the rate of inflation, the world supply of iron ore and the stability of exchange rates can all cause significant fluctuations in prices. Such external economic factors are in turn influenced by changes in international investment patterns, monetary systems and political developments. The price of iron ore has fluctuated widely in recent years, and future price declines could cause commercial production to be impracticable, thereby having a material adverse effect on the Company's business, financial condition and result of operations.

Environmental

The Company's activities are subject to extensive federal, provincial state and local laws and regulations governing environmental protection and employee health and safety. Environmental legislation is evolving in a manner that is creating stricter standards, while enforcement, fines and penalties for non-compliance are also increasingly stringent. The cost of compliance with changes in governmental regulations has the potential to reduce the profitability of operations. Further, any failure by the Company to comply fully with all applicable laws and regulations could have significant adverse effects on the Company, including the suspension or cessation of operations.

Title to Properties

The acquisition of title to resource properties is a very detailed and time-consuming process. The Company holds its interest in certain of its properties through mining claims. Title to, and the area of, the mining claims may be disputed. There is no guarantee that such title will not be challenged or impaired. There may be challenges to the title of the properties in which the Company may have an interest, which, if successful, could result in the loss or reduction of the Company's interest in the properties.

One of the Company's projects is the Rivière Doré project, which is located southeast of the town Val-d'Or, Quebec. Canadian law related to aboriginal rights, including aboriginal title rights, is in a period of change. There is a risk that future changes to the law may adversely affect the Company's rights to its Canadian projects, including the Rivière Doré project. Consultation with First Nations is required of the Company in environmental assessment, subsequent permitting, development and operation of its proposed projects. There is a risk that the First Nations may publicly oppose the proposed project at any stage and this potential opposition may adversely affect the project or the Company's public image.

Uninsured Risks

The Company maintains insurance to cover normal business risks. In the course of exploration and development of mineral properties, certain risks, and in particular, unexpected or unusual geological operating conditions including explosions, rock bursts, cave-ins, fire and earthquakes may occur. It is not always possible to fully insure against such risks as a result of high premiums or other reasons. Should such liabilities arise, they could result in significant liabilities to the Company and increase costs of projected.

Competition

The Company competes with many other mining companies that have substantially greater resources than the Company. Such competition may result in the Company being unable to acquire desired properties, recruit or retain qualified employees or acquire the capital necessary to fund its operations and

COPPER ONE INC.

Management's Discussion and Analysis

For the three and six months ended June 30, 2014

develop its properties. The Company's inability to compete with other mining companies for these resources would have a material adverse effect on the Company's results of operation and business.

Dependence on Outside Parties

The Company has relied upon consultants, engineers and others, and intends to rely on these parties for development, construction and operating expertise. Substantial expenditures are required to establish mineral reserves through drilling, to carry out environmental and social impact assessments, to develop metallurgical processes to extract the metal from the ore. If such parties' work is deficient or negligent or is not completed in a timely manner, it could have a material adverse effect on the Company.

Share Price Fluctuations

The market price of securities of many companies, particularly exploration stage companies, experience wide fluctuations in price that are not necessarily related to the operating performance, underlying asset values or prospects of such companies. There can be no assurance that fluctuations in the Company's share price will not occur.

Conflicts of Interest

Certain of the Company's directors and officers serve or may agree to serve as directors or officers of other companies and, to the extent that such other companies may participate in ventures in which the Company may participate, the directors of the Company may have a conflict of interest in negotiating and concluding terms respecting such participation.

Current Management

The Company is very dependent upon the personal efforts and commitment of its existing management. To the extent that management's services would be unavailable for any reason, a disruption to the operations of the Company could result, and other persons would be required to manage and operate the Company.

Subsequent Events

On July 3, 2014, the Company appointed the Honourable Pierre S. Pettigrew, p.c. as Strategic Advisor to the Board of Directors. In connection with the appointment, the Company has granted Pierre Pettigrew 100,000 stock options. The stock options vest immediately, subject to a four month regulatory hold period, and may be exercised at a price of \$0.07 per option for a period of five years from the date of grant.

On July 17, 2014, 400,000 stock options exercisable at \$0.64 expired unexercised.

On July 22, 2014, the Company issued 2,000,000 common shares at a deemed price per share of \$0.05 in settlement of accounts payable owing to Axemen Resource Capital Ltd. on account of capital markets and advisory services (see the press release on July 3, 2014). The common shares issued pursuant to the shares for the shares for debt settlement are subject to a hold period of four months and one day expiring on November 22, 2014.

Additional Information

Additional information about the Company is available for viewing on SEDAR at www.sedar.com.